

Art News



VOLUME 27, ISSUE 2 ""PRETTY SKETCHY" & "ILLUSIONS"

MARCH / APRIL 2024

2023-2024 SAL OFFICERS

PRESIDENT- JohnMark
McElhinny

VICE PRESIDENT OF EXHIBITS

-Rebecca Sherrick - John Emery

VICE PRESIDENT OF PROGRAMS

-Dan Martin

TREASURER/GALLERY DIRECTOR

-Kathy McElhinny

SECRETARY/NEWSLETTER-

Dawn Addy

MEMBERSHIP- Susan
Carden-Flicker

PUBLICITY- Joan Crutcher
- Audrey Tucker

VOLUNTEER SCHEDULING:
Jane Theis

AT LARGE: Steve Costner - J. D.
Mumford, Carol Chiaverini -
Lori Knerick - Kyle Heinly,
Ruthanne Heinly

GALLERY HOURS

Tuesday- Friday

12-5:00

Saturday 10-6:00

Sunday 12-4:00

819 East

Strawbridge
Avenue

Melbourne, FL
32901

321-952-3070

Congratulations to SAL artists: : Ranjana Bacrania, Nancy Dillen, Susan Carden-Flicker, Charlotte Mello Stevenson and Kim Hunt for their recent awards in juried shows throughout Brevard, Osceola and Indian River counties! Well Done!! (see SAL facebook for links to artists and more details.)

*Art is not what you see,
but what you make others see.*

-Edgar Degas

WELCOME NEW SAL MEMBERS

Maureen Grube
charcoal, oil, acrylic

Frank Wolking
photography

David Stroker
acrylic

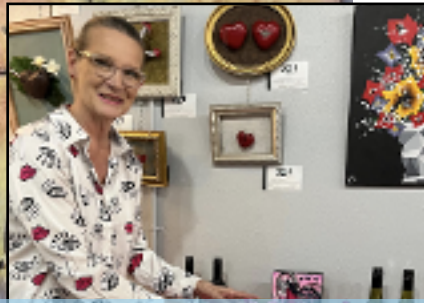
STRAWBRIDGE
ART LEAGUE &
GALLERY

*Brevard's
foremost
organization
for community
and working
artists.*



Professionalism is Key-

Pay attention to those little details in framing, hanging and presenting your work. It will pay off in sales and happy patrons.



The job of the artist is always to deepen the mystery. -Frances Bacon

THESE EYES EXHIBIT

CONGRATULATIONS SAL ARTISTS!

Rebecca Sherrick took first place, People's Choice Award for the SAL February exhibit with , "Compartmentalized" (on left)/SOLD!

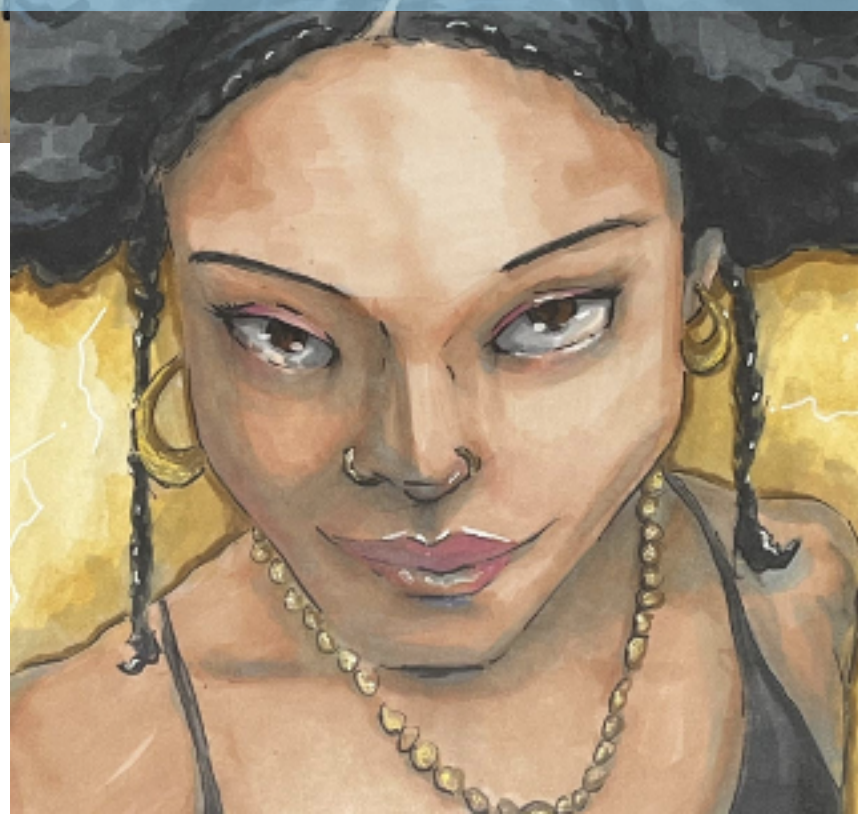
Go Kyle!

Come join the festivities March 21 as Kyle celebrates his birthday with a special pop-up exhibit at Creative Bazarre, 6-8pm.

Kyle Heinly will be heading to Kyle, Texas in May to display his work at their annual "Kyle Festival" where all "Kyles" are invited to gather and celebrate all things "Kyle".

Behind these eyes is a world waiting to be explored.

-Anonymous



*Behind every pair
of eyes is a story.*
-anymous

ANNOUNCEMENTS

- We have been asked for donations by the art teachers of Brevard. We will place a box in the gallery to bring art supplies and any cash donations to support the visual arts in our community.
- Starting July 1, 2024 there will be a 10% increase in gallery space fee. due to increasing gallery costs.
- Display cubes will be repainted this spring.
- The Gallery will be changing to a keyless lock system this year.

- Elevator is now working at the town hall lot.
- Security cameras have been installed in la Galeria area.
- Contact Susan Carden-Flicker to pay your Art League dues for this year if you have not already paid.
- Elections: the current board has agreed to run for office for another year.

ARTIST OPPORTUNITIES

- Bring your botanica artwork to see during the Melbourne Botanical Festival, April 13.
- Offer an Artist Demo at the Gallery in June. Contact Dan Martin to discuss.
- Get more exposure for your artwork: Post your images on the SAL website and update your section of the "meet the Artist" book in the gallery. Contact JohnMark for more details.
- Foo Bar, Melbourne Civic Theater and Melbourne Mainstreet have been displaying SAL artwork. If you are interested in displaying your work at these locations contact Kathy.
- Melbourne Art Show is once again looking for volunteers.

NEW SAL GALLERY MONTHLY FEE POLICY

Gallery artist are expected to pay their fees on time. If anyone becomes two months delinquent they will be sent a written notice. At three months delinquency the artist is expected to communicate the reasons to the Board. The board will meet, and determine action on a case-by-case basis. If there is no response from the artist, their artwork will be removed from the wall and held until the back dues are paid in full. At that time the Artist may pick up their work.

Carden-Flicker

In a world full of noise, let your eyes speak.

-Anonymous

CALENDAR

TUESDAY EVENINGS 6-9 BYOA (Bring Your Own Art) Night 6:00-9:00 at the Gallery. Gather together with your community of great artists.

WEDNESDAY EVENINGS 6-7 Ruthanne Heinly leads workshops for creating your own emotional support critters (\$25 materials fee). Contact Ruthanne at Creative Bazarre for more information.

MARCH 5 - APRIL 1 "Pretty Sketchy" exhibit
MARCH 19 - Tuesday - Artist Demo and general membership meeting.

APRIL 1 - Monday - Take-in for "April Fools/Illusions" exhibit.

APRIL 2 - MAY 6 "April Fools/Illusions" exhibit.

APRIL 6 - Saturday - "Illusions" exhibit Opening Reception. 12-4

APRIL 13 - Saturday - Melbourne Botanical Festival 8am-4pm.

APRIL 16 - Tuesday - Artist Demo and general membership meeting.

MAY 6 - Take-in for "On the Menu" Exhibit.

MAY 7 - June 3 "On the Menu" exhibit.

MAY 11 - Saturday - "On the Menu" Opening Reception. 12-4

MAY 21 - Tuesday - Artist Demo and general membership meeting.

You can't use up creativity. The more you use it, the more you have. -Maya Angelou

ARTIST DEMOS (3rd Tuesday/monthly)

- **February:** Thanks again to **Kathy McElhinny** for her demo on **Mardi Gras mask making** techniques.
- **MARCH:** **Georgene Granholm** - Still Life
- **APRIL:** **Doug Gertzen** - Digital Art
- **MAY:** **Cheryl Galati** - using "Drawtight"



Congratulations Catrina S. Fisher for "Visitors", People's Choice winner at the SAL January "Landscapes" Exhibit.



Share SAL events...Post, share, like Gallery events... and promote yourself!

Come to our shows and bring your friends and vote for the People's Choice Best in Show!

